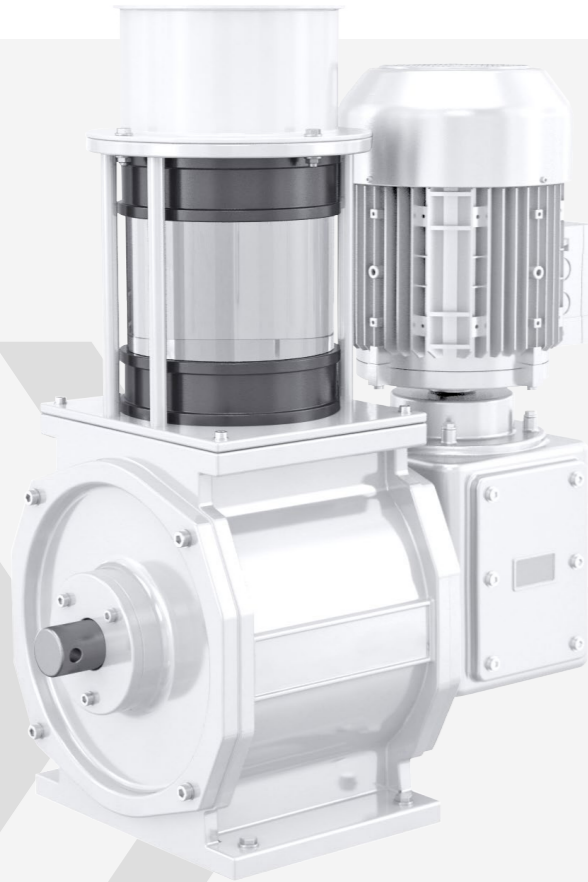


ROTARY VALVE

The rotary valve „HSCK“ is used for the continuous discharge or dosing of granular and powdery bulk materials. It is usually also used to separate zones with different pressure ratios from one another.



FUNCTION

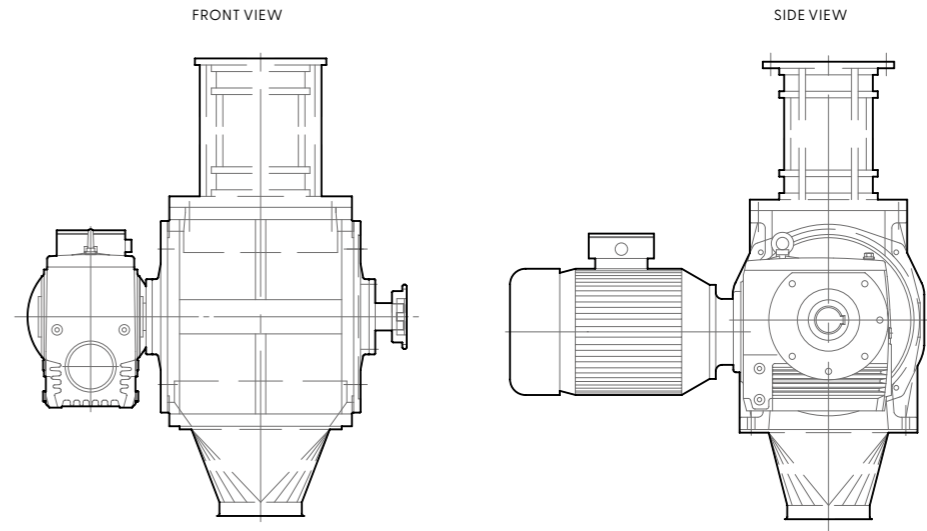
A rotor with radial ribs rotates in the cylindrical, cast iron housing. The product falls into the chambers of rotor and is stored there for half a turn. The product then flows out of the chambers/ out of the rotary valve into the space below.

FEATURES

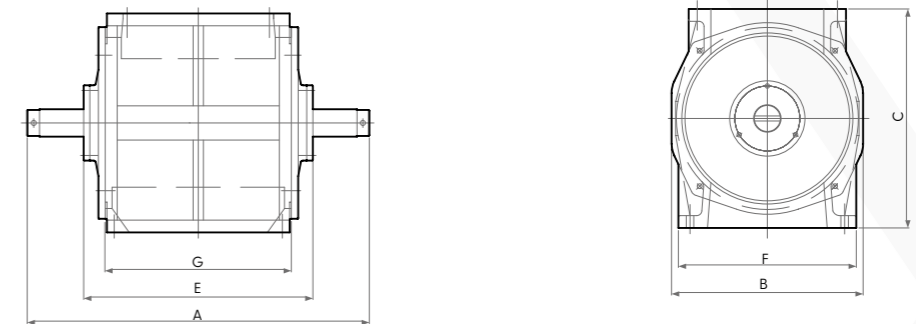
- > High tightness
- > Low-maintenance operation
- > Max. over/under pressure 0,5bar
- > Several valves can be operated in series with just one drive
- > Suitable for use in potentially explosive areas (inside/outside; not suitable for decoupling explosions)

OPTIONS

- > Different drive motors
- > Couplings
- > Rotation speed monitoring
- > Inlet sightglas
- > Outlet hopper
- > Rotary valve support
- > Custom painting (standard: RAL9003/ RAL3003)



ROTARY VALVE WITH MOTOR, SIGHTGLAS AND OUTLET HOPPER (OPTIONALLY AVAILABLE)



ROTARY VALVE WITH BARE SHAFT

TECHNICAL DATA

Type	Capacity per Rotation [dm³/rot.]	Capacity¹ [t/h]					Weight [kg]		Volume [m³]
		Wheat	Flour	Bran	Corn	Semolina	Net	Gross	
HSCK-25/21	5	5,5	4,0	2,6	5,9	3,3	57	81	0,1
HSCK-25/27	6,2	6,8	4,0	3,2	7,3	4,1	61	88	
HSCK-25/33	7,6	8,4	6,1	3,9	8,9	5,0	75,5	104	

¹ Capacities are non-binding values, which are based on average product parameters. The Capacity may vary depending on product, humidity, and environmental conditions. Base: 35rpm, 70% filling.

DIMENSIONS (MM)

Type	A	B	C	E	F	G
HSCK-25/21	375	280	320	275	260	210
HSCK-25/27	435			337		272
HSCK-25/33	505			398		333