

VIBRO FEEDER

The vibro feeder „VVDE“ is used for the even, volumetric dosing of non-freeflowing bulk materials such as filter flour.



FUNCTION

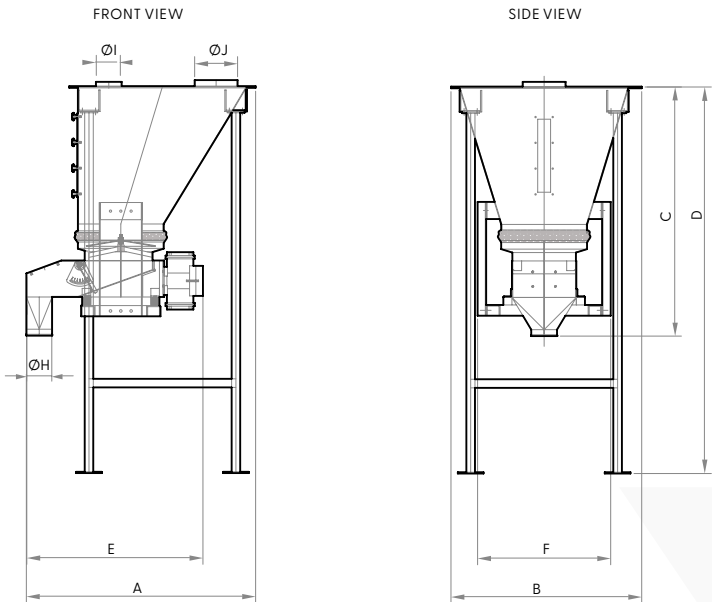
The product falls from above through the round inlet into the dosing device, which also serves as a buffer tank. Then, the product is evenly discharged and dosed via a subsequent vibro dosing chute. The dosing quantity can be infinitely adjusted with the help of an integrated slide gate.

FEATURES

- › Even, volumetric dosing (also of non-freeflowing products)
- › Low energy consumption
- › Easy setting of the dosing quantity
- › Suitable for use in potentially explosive areas (inside/outside)

OPTIONS

- › Body extension for larger volume
- › Low- and high-level detectors
- › Wall, ceiling or floor mounting
- › Custom painting (standard: RAL9003/ RAL3003)



TECHNICAL DATA

Type	Motor Power [kW]	Aspiration [m³/h]	Content [m³]	Housing Extension [m]	Weight [kg]		Volume [m³]
					Net	Gross	
VVDE-200	0,18	5	0,35	–	130	185	3,1
VVDE-200G¹			max. 1,5	max. 2	150	950	3,6

¹ Model with extenden housing (cylinder).

DIMENSIONS [MM]

Type	A	B	C	D	E	F	ØH	ØI	ØJ
VVDE-200	1.068	913	1.160	1.800	820	620	120	120	120
VVDE-200G			1.452	3.800			150		150